



# Reflex-ions

The monthly newsletter of the **Louisville Photographic Society**

## MARCH PROGRAM

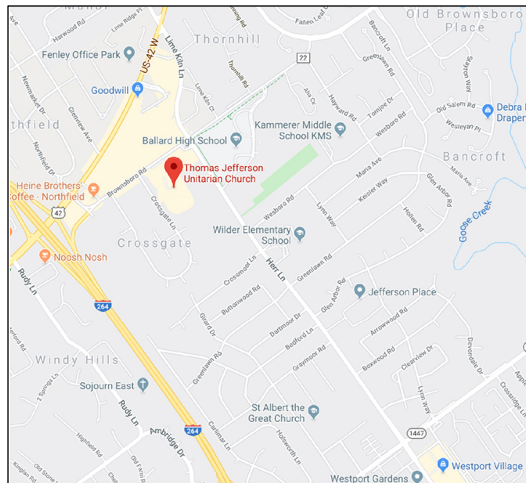
### KEVIN LAUNDROCHE: MEET THE NEW PRESIDENT

Wednesday, March 11, 7:15 pm at T.J. Unitarian Church

Our new president for the next two years will introduce himself in an "inaugural address" that will highlight his background and display images of the kinds of things he likes to shoot. It's a night of debuts, as we return to Thomas Jefferson Unitarian Church, where we met 14 years ago. Audience participation is highly encouraged.

## WE'RE AT A NEW LOCATION!

Beginning this month, LPS meetings will be held at the Thomas Jefferson Unitarian Church, 4936 Brownsboro Road (directly across from Holiday Manor Shopping Center). The entrance is on Brownsboro (KY 22) and the sign can be seen from the street, but the church is set back from the road. You'll need to take the driveway that leads to the building housing the Rodes clothing store and follow it back to the church and the main parking lot in front of the building. Go in the main doors, directly behind the circular-drive church entrance. The club will meet in the Weston Room and Welcoming Space.



**Year-end awards** appear in their own section that you will receive in a separate email.

## 2020 MONTHLY LPS PHOTO CATEGORIES

- Jan:** Scenic
- Feb:** Member's Choice
- Mar:** Rule of Thirds
- Apr:** Three Things...
- May:** Windows
- June:** Transportation
- Sep:** Leading Lines
- Oct:** Flowers
- Nov:** Event (w/people)
- Dec:** "C" is For...

**Also in November:**  
Photo Book competition

**Also in December:**  
Member's Choice Slide Show Competition

**July-Aug:** Summer seminars (no competition)

### DON'T FORGET...

...to submit an entry form when entering the monthly competitions at LPS meetings. They are available for download on our website.

...to send Kay a digital copy of your winning print photo immediately after the competition (see Page 10 for address)

...to pick up your winning photographs at the monthly meetings.

## INSIDE

- News and notes.....2
- LPS Contest rules.....3
- LPS Beginnings.....4**
- Calendar.....5
- Feb. winners.....6-13
- About LPS.....14
- Board listing.....15



This 130-foot dragon will be one of the stars of the show.

## LANTERN FESTIVAL OPENS AT ZOO

Kyle Shepherd wants everyone to know about the Wild Lights: Asian Lantern Festival at the Louisville Zoo, which opened March 5 and runs through April 25 (Thursdays through Sundays, 6:30-10 pm). The night event features 65 scenes illuminated by more than 2,000 Chinese lanterns and 50,000 LED light bulbs, plus traditional Chinese performances on an entertainment stage and Asian food and drink items. Tripods are welcome, but Kyle suggests coming on a Thursday or Sunday, which should be the slowest nights, and not during Spring Break (March 30-April 5); she'd also like to arrange a meetup sometime in April. Advance online tickets are \$18.50 for non-members, \$15.50 members, but 4-packs are available (must arrive together) for \$60 non-member, \$50 member. Plus \$5 to park. It's a bit more at the gate.

## BILL PUSZTAI SHOW

Just a reminder that the exhibit by Canadian photographer Bill Pusztai, titled "Downtown East Side" and recommended by the Louisville Photo Biennial folks, runs through March 28 at the garner narrative gallery at 642 E. Market (1-6 pm Wed-Thu, 11am-6pm Fri-Sat, 11am-5pm Sun, 11am-9pm March 6). Pusztai, who has exhibited in past Biennials, takes viewers on an intimate guided tour of his city, Vancouver, B.C. "One tends to think of social issues as local," he says, "but many of these will resonate with people from any large enough city in North America."

**Paletti update:** No speaker at the Paul Paletti Gallery this month, but instead there will be a reception for the opening of his "Persistence of Beauty" show, from his collection, from 6-9 pm on Friday, March 6. The Facebook link is <https://www.facebook.com/events/222388585609717/>

## 2020 CATEGORY POINTS LEADERS

### Digital images

#### Advanced

Ken Tripp.....	13
Tom Barnett.....	12
Greg Miller.....	12
Christine Hayden.....	10
Kelly Davenport.....	7

#### Amateur

Leigh Anne Logsdon.....	25
Jackie Mattingly.....	14
Greta Garbo.....	10
Barbara Harris.....	7
2: Carolyn Hawkins, Julie Holloway, Paula Logsdon	

### Color prints

#### Advanced

Tom Barnett.....	30
Deborah Brownstein.....	12
George Sherrard.....	7
Christine Hayden.....	6
Robert Klein.....	5

#### Amateur

Carolyn Hawkins.....	24
Barbara Harris.....	20
Leigh Anne Logsdon.....	8
Bill Van Susteren.....	4
Eric Baker.....	4

### Monochrome prints

#### Advanced

John Holthaus.....	13
Deborah Brownstein.....	12
Christine Hayden.....	12
Bob Dorzback.....	8
Greg Miller.....	7

#### Amateur

Barbara Harris.....	24
Leigh Anne Logsdon.....	13
Jackie Mattingly.....	10
Bill Van Susteren.....	7
Eric Baker.....	4

## KNOW YOUR BYLAWS: PHOTO CONTEST RULES

How well do you know the rules for the monthly photo contests? Digital requirements run every month in the newsletter, but print rules can only be found on the website under "Membership Info." The last by-laws revision came about in October 2009; since then, photography has evolved considerably and LPS has welcomed dozens of new members. So here is a refresher, with the most important sections in **BOLD**.

1. There are three separate regular monthly competition divisions: Color Prints, Monochrome Prints and Digital Images (digital files). Advanced and Amateur classes were added in 2018.
2. Only Members in good standing may enter competitions.
3. **Each entry for competition must have been under the control of the member-entrant at the time of exposure.** In addition to all work performed by the entrant, specifically allowed for entry are: Commercially developed slides which have been scanned to digital files or printed, negatives, commercially printed photographs, commercially mounted prints and laser prints.
4.
  - a. **In regular competitions (Color Prints, Monochrome Prints and Digitals) each member may submit up to two (2) entries in each division each month, with a maximum of six entries for any one competition**
  - b. In special competitions such as videos, the presentations must be pre-scheduled. Such special competitions must be approved by the Board of Directors.
  - c. For competitions in such divisions as novice or advanced, the eligibility requirements, the number of entries, and the awards given shall be determined by the board of directors.
5. In regular competition, subject matter must conform to the assigned category. The judge will reject any entry not conforming to the category subject.
6. **No entry which has ever received an award in competition in the Society's competitions (1,2,3, or HM) can be re-entered in any monthly competitions of the Society.**

7. **The same photo may not be entered in more than one category on the day of a competition** (i.e., a color print may not also be entered as a monochrome print or a digital print on the same day). **"Same photo" means an identical shot: one having the same content and composition.** An enlarged or reduced copy may also not be entered on the same day.

8. **Different photos taken of the same subject from different angles, and photos involving movement of the subject or the passing of time are permissible, both as multiple entries on the same day, and as variations on a photo that has previously won points.**

9. **Crops of entries which have previously won are not allowed to be entered, nor are any other photos made by adjustments to winning entries. Once a photograph has won points, no part of the negative, print, slide or digital file may be entered again.**

10. **Slide "sandwiches" or print or digital layering are permissible as long as all the elements in the photos and slides are the original work of the member.**

11. **Adjustments to photos and slides such as those done in the dark room, developing process or with computer "photo manipulation" programs are permissible. This would include adjusting contrast or color, burning, dodging, sharpening, blurring, etc. However, adding items supplied by computer programs (such as a flower, the moon, etc.) is not permitted.**

12. **Manipulation of a photograph to the extent that it no longer resembles a photograph is not allowed, except in the digital division, where creative expression is permitted.**

13. **An entry blank must be filled out for every entry and turned over to the Second Vice-President before the competition begins.**

### NOTES:

All photos must be mounted/matted to 16" x 20"

Monochrome prints may be toned.

Hand-colored prints will be judged in the color print division.



# LPS HISTORY: THE FIRST NEWSLETTER

LPS has had a monthly newsletter for almost all of its nearly 80-year history. It's been called Reflex-ions since the mid-1970s and "Reflections" before that. But the club newsletter predates LPS and started with the Louisville Movie Club. Untitled for its first issue in April 1942, it soon took on the title "Movie-Grams" at least through the 1940s. The first issue reflects its time, with many items dealing directly with World War II and national defense, and a full page explaining how photographic censorship may work in wartime. LMC was soon to become directly involved, agreeing in September 1942 to produce a 20-minute color film for the Louisville Defense Council that finally premiered in the fall of 1943.

## This month in LPS history

**75 years ago:** Monthly meetings moved from the Seelbach to the Watterson Hotel's mezzanine parlor. Program consisted of sound movies from the Army Service Forces from Fort Hayes in Columbus, Ohio; 16mm movies of the February banquet; and display of photos submitted on the topic "Photo Montage."

**40 years ago:** Category was Snow & Ice. Program was a slide show, "The Canadian Rockies Set to Music," by Al and Terry Boice.

**35 years ago:** Category was Animals. Program featured a 16mm movie, "Kentucky's Feathered Rainbow," from the state Fish and Wildlife department.

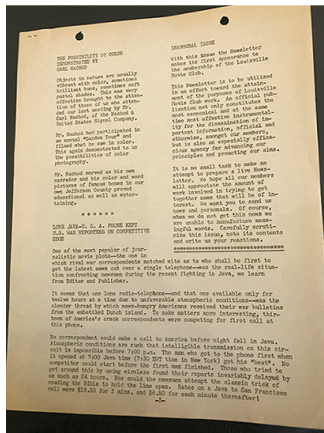
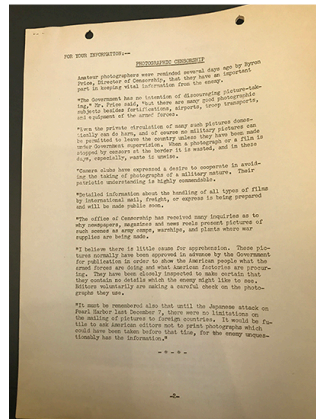
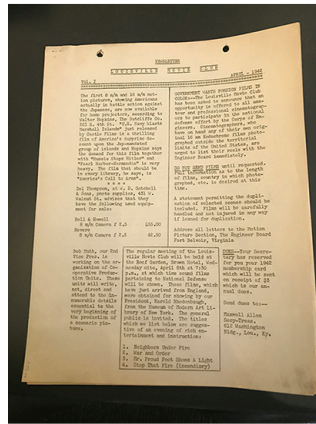
**30 years ago:** Category was Bridges. Adam Jones presented a program on nature photography.

**25 years ago:** Category was What Is It? Speaker was Dr. Gene Burch, a dentist from Frankfort who has produced a calendar of Frankfort images. ... LPS member Linda Morton's black and white photo was chosen for the Kentucky Moments III exhibit sponsored by the Frankfort Arts Foundation and the Frankfort Camera Club. The exhibit will soon open at the State Capitol, then travel the state for one year to libraries throughout Kentucky.

**20 years ago:** Category was Bridges. Program was a slide show on Spain from Al and Terry Boice. ... The annual showcase will be at Bashford Manor Mall in the old Walden Bookstore site near Dillard's on March 18-19. Each member may contribute up to 12 photographs; to enter slides, see Gertrude Hudson.

**10 years ago:** Category was Objects in Repetition. Program was by Kevin Laundroche, who shared his self-publishing experience with club members.

**Five years ago:** Category was Americana. Speakers were Kevin and Stephanie Turner with images from their three-week, cross-country motorcycle trip the past summer.



The first Louisville Movie Club newsletter, from April 1942. (Courtesy Filson Historical Society)

# UPCOMING WORKSHOPS

**Mike Matthews  
Flower Photography  
Workshop  
Mar 14, 10am-1pm  
\$89 per person  
(Murphy's Camera  
1440 Bardstown Road)**

In this hands-on workshop, Mike will share tips on how to capture great floral images and artistic tricks on how to turn a good image into a GREAT image There will be multiple shooting stations of different flowers and a light table to get beautiful "high key" images. He will cover the use of flash and macro floral photography, too. Tickets available through the Murphy's Camera Facebook page or by calling (502) 485-1500.

**Spring Photography  
Weekend  
April 17-19  
Pennyrile Forest State  
Resort Park,  
Dawson Springs**

Digital photography contest with an evening program by photo professionals. Photographers may be taken anywhere within the state park and forest. Online registration \$30, same day of \$35. Children up to Advanced divisions. Call (270) 797-3421 for more info.

**Nature Photography  
Weekend  
Cumberland Falls State  
Resort Park, Corbin  
April 24-26**

30-hour digital photo contest plus presentations from nature photographer Jerry Whaley. Registration \$50. For more info and registration, email BretA.Smitley@ky.gov or call (606) 528-4121



## MARCH-APRIL 2020

<i>Sun</i>	<i>Mon</i>	<i>Tue</i>	<i>Wed</i>	<i>Thu</i>	<i>Fri</i>	<i>Sat</i>
1	2	3	4	5	6	8
8	9	10	11 <b>LPS 7:15</b> First meeting at Thom. Jefferson Church	12	13	14 Mike Matthews workshop at Murphy's, 10a
15	16	17	18	19	20	21
22	23	24	25 Digital deadline, "Three Things..."	26	27	28
29	30	31	1	2	3	4
5	6	7	8 <b>LPS 7:15</b>	9	10	11

### DON'T FORGET TO SHARE 'YOUR BEST SHOT' EACH MONTH

You can submit up to five digital images each month to the "Your Best Shot" slideshow that precedes the monthly speaker at each meeting.

These aren't judged or count for points, but they are a great way for members to share something they are proud of that don't fit that month's category.

The photos can be from any time but should be your original work. Feel free to speak up and say a little about your images when they are shown at the meeting. "Your Best Shot" digital images can be submitted as late as the day before the monthly meeting. Please send to:

[LPSBestShot@gmail.com](mailto:LPSBestShot@gmail.com)

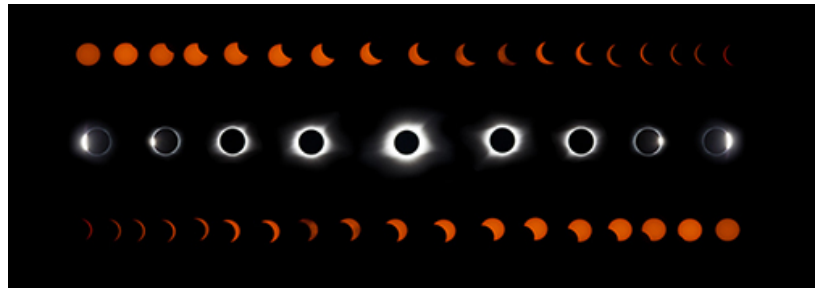
**FEBRUARY WINNERS: ADVANCED DIGITALS**

TOPIC: MEMBER'S CHOICE

JUDGE: PATRICK PFISTER

**1st: Greg Miller**

*Eclipse*

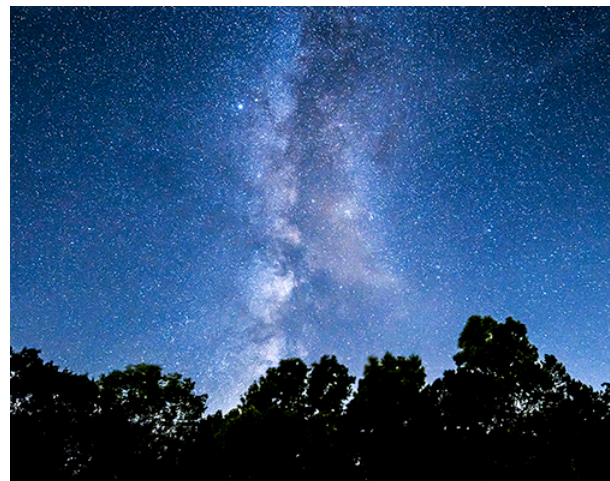


**2nd: Ken Tripp**

*Eagle Approaching*

**3rd: Kelly Davenport**

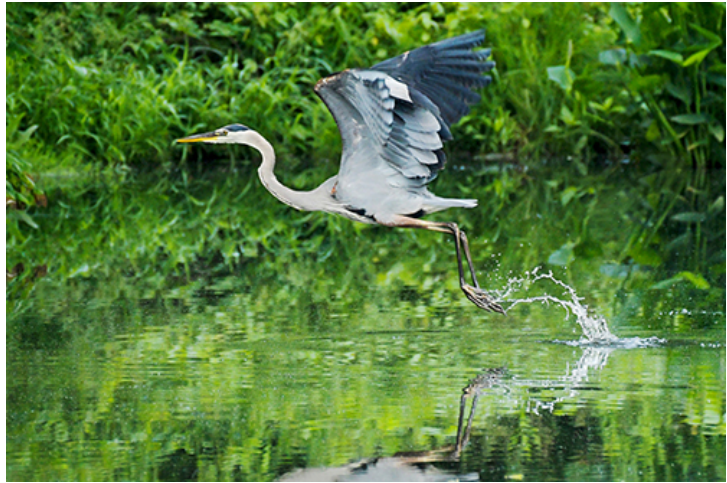
*Milky Way Over Indiana*



## FEBRUARY WINNERS: ADVANCED COLOR

**1st: Tom Barnett**

*Winged Ascent*



**2nd: Tom Barnett**

*Leaves of Coral Bells*

**3rd: Robert Klein**  
*Fort Lauderdale Beach*





**FEBRUARY WINNERS: ADVANCED MONOCHROME**

**1st: Deborah Brownstein**

*Clematis*



**2nd: Bob Dorzback**

*White Sands National Monument*

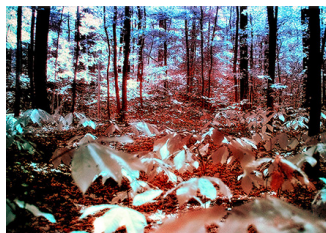
**3rd: John Holthaus**

*Mountain Stream*



# FEBRUARY: ADVANCED HONORABLE MENTIONS

## Digital



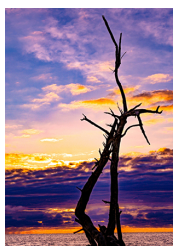
**Kelly Davenport**

*Infrared View  
from the Forest Floor*



**Gertrude Hudson**

*Stairway, French Lick*



**Ted Heitzman**

*Purple Haze Sunrise*



**John Holthaus**

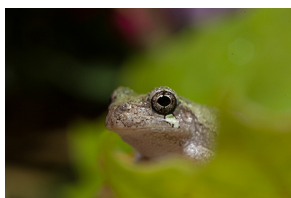
*Flying*

## Color



**Christine Hayden**

*Fly By*



**Greg Miller**

*Frog*



**Greg Miller**

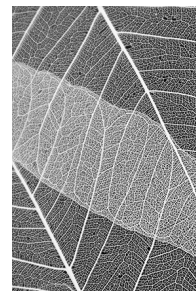
*Antelope Canyon*



**Kay Sherrard**

*Oh My Gosh!*

## Monochrome



**George Sherrard**

*Leaf Veins*



**Ted Heitzman**

*Much Needed Break*



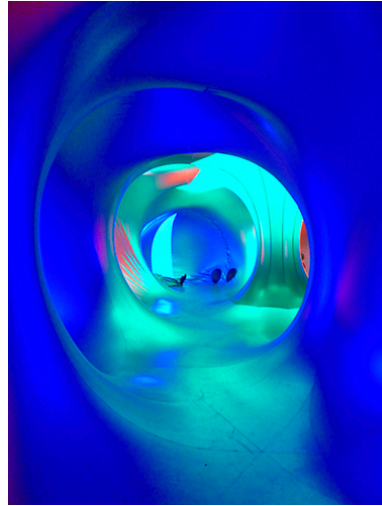
**Kelly Davenport**

*Star Trails over Deam Lake*

## FEBRUARY WINNERS: AMATEUR DIGITAL

**1st: Jackie Mattingly**

*Luminarium*



**2nd: Leigh Anne Logsdon**

*All Aboard*

**3rd: Leigh Anne Logsdon**

*Mushrooms*





## FEBRUARY WINNERS: AMATEUR COLOR

**1st: Barbara Harris**

*Balancing Act*



**2nd: Leigh Anne Logsdon**

*Raptor Rehab*

**3rd: Carolyn Hawkins**

*Ocean Color Palette*



**FEBRUARY WINNERS: AMATEUR MONOCHROME**

**1st: Barbara Harris**

*Bison*



**2nd: Leigh Anne Logsdon**

*Raptor Rehab*

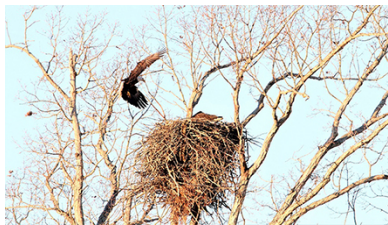


**3rd: Bill Van Susteren**

*Wild Horse*

## FEBRUARY: AMATEUR HONORABLE MENTIONS

### Digital



**Julie Holloway**  
*Eagle in Flight*



**Carolyn Hawkins**  
*Flower Frog*



**Paula Logsdon**  
*Boating at Sunrise*

### Color



**Carolyn Hawkins**  
*Frog Portrait*



**Eric Baker**  
*Aspens*



**Bill Van Susteren**  
*Wire Canyon*

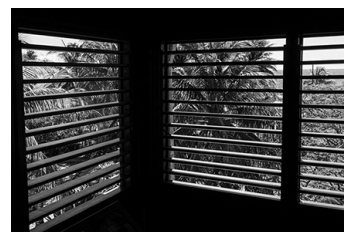


**Julie Holloway**  
*Female Elk Posing*

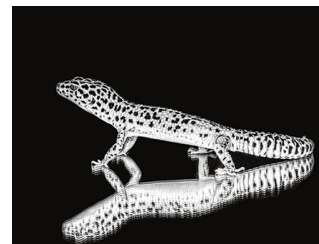
### Monochrome



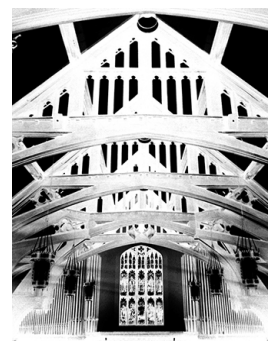
**Eric Baker**  
*Woman at St. George Island*



**Eric Baker**  
*Windows on Hemmingway*



**Carolyn Hawkins**  
*Reflection*



**Jackie Mattingly**  
*White Church*



## ABOUT THE LOUISVILLE PHOTOGRAPHIC SOCIETY

Membership in LPS is open to everyone. You must be a member of LPS to submit photos for competition. There are two levels of competition, Amateur and Advanced, and three categories at each level, Color Prints, Monochrome Prints, and Digital submissions. No more than 6 entries may be submitted, with no more than 2 entries in each group. Digital images must be submitted **no later than two weeks before the meeting** and must be no larger than 1 MB, with no more than 1024 pixels on the long side at a resolution of no higher than 120 DPI.

You MUST compete at the Advanced level if:

- You are a professional photographer (you earn more than 50% of your annual income from photography).
- You have had a juried gallery showing.
- If you are an accomplished photographer and are not in the above groups, you are encouraged to enter at the Advanced level.

See the LPS website for complete rules: [www.louisvillephotographic.org](http://www.louisvillephotographic.org)

## MEETING INFO

The Louisville Photographic Society meets the 2nd Wednesday of every month except July or August at 7:15 p.m.

Meetings are held at Thomas Jefferson Unitarian Church, 4936 Brownsboro Road. The entrance driveway is across from Holiday Manor Shopping Center and toward the building housing Rodes and Brownsboro Dermatology. Go past that building and proceed to the church. Park in front and go through the doors behind the circular drive at the front of the building.

## LPS EMAIL ADDRESSES

### Website

<https://www.louisvillephotographic.org>

**Send digital entries (deadline 2 weeks before meeting) to:**

[louisvillephotographic@gmail.com](mailto:louisvillephotographic@gmail.com)

**Send monthly print winners (after competition) to:**

[LPSprintwinners@gmail.com](mailto:LPSprintwinners@gmail.com)

**Send Best Shot submissions (deadline day before meeting) to:**

[LPSBestShot@gmail.com](mailto:LPSBestShot@gmail.com)

**Newsletter editor:**

[glenn@louisvillephotographic.org](mailto:glenn@louisvillephotographic.org)

## IT'S YOUR BOARD!

Got a question, comment or concern about LPS? Find a board member at the meeting or send any of them an email to:

FirstName@louisvillephotographic.org

or to me at:

[glenn@louisvillephotographic.org](mailto:glenn@louisvillephotographic.org)

Any member can attend a board meeting and introduce a topic (but only the board can vote at that meeting).

Next meeting is Thursday, March 26 at 6:30 pm at Old National Bank, 9708 Brownsboro Road.

## 2020-21 LPS BOARD

<b>President</b>	Kevin Laundroche
<b>1st Vice President*</b>	Eileen Strenecky
<b>2nd Vice President**</b>	Kyle Shepherd
<b>Treasurer/State Fair Liaison</b>	Carolyn Hawkins
<b>Secretary</b>	Barbara Harris
<b>Ex-Officio Past President</b>	Christine Hayden
<b>Summer Seminars</b>	David Becker
<b>Student Division of State Fair, Year-End Book Competition</b>	Deborah Brownstein
<b>Website/Year-End Program/Digital Competition</b>	Kay Sherrard
<b>Newsletter Editor</b>	Glenn Brownstein
<b>March of Dimes Coordinator</b>	Ted Heitzman

\*-Meetings and hospitality; \*\*-Obtains judges

## SUPPORT OUR LPS SPONSORS

### Outdoor Photo Gear

13005 Middletown Industrial Blvd., Suite G  
Louisville, KY 40223  
502-244-2888  
[www.outdoorphotogear.com](http://www.outdoorphotogear.com)

### Unique Imaging Concepts

200 Distillery Commons #120  
Louisville, KY 40206  
502-636-4150  
<https://uniqueimagingconcepts.com>

### Murphy's Camera

1440 Bardstown Road (40204)  
502-485-1500  
•  
Shelbyville Road Plaza #645  
4600 Shelbyville Road (40207)  
502-893-5089  
[murphyscamera.com](http://murphyscamera.com)

### Kinetic Imaging Services

200 Distillery Commons, Suite 200  
Louisville, KY 40206  
502-719-9500