



# Reflex-ions

The monthly newsletter of the **Louisville Photographic Society**

## SEPTEMBER'S SPEAKERS

### SHAH JAVID AND PAM PATENAUDE

**Wednesday, Sept. 11, 7:15 pm at ARGI Financial**

Shah Javid, owner of Masters Frame Shop & Supply in Clarksville, Ind., and his lead framer, Pam Patenaude, will speak about the benefits of framing and how it can enhance any photograph. They'll also address other services available at their shop.

Masters Frame Shop is handling the framing of photos in our Louisville Photo Biennial Show at the Clarksville Library next month. Shah has offered to deliver your framing to tonight's meeting, if you are unable to go to Clarksville to collect it. However, please set up your order in advance, including payment. Wednesday night he will also answer any last-minute questions and assist with your Biennial framing if needed.

## GREETINGS FROM THE NEW EDITOR

With this issue I take over the production and editing of Reflex-ions, and I hope to make your newsletter as lively and informative as I can with your help. Please send anything you'd like me to include to [glenn@louisvillephotographic.org](mailto:glenn@louisvillephotographic.org). Deadline is 11 days before the meeting date (three days after the digital entry deadline) so that you'll receive the newsletter at least a week before the meeting. Thanks!

— Glenn Brownstein

## 2019 MONTHLY LPS PHOTO CATEGORIES

- Jan:** Scenic
- Feb:** Member's Choice
- Mar:** Stairs
- Apr:** Glass
- May:** Back or Side Light
- June:** Triptych
- Sep:** People and Hats
- Oct:** Panning
- Nov:** Water's Edge
- Dec:** Mammals

**Also in December:** Annual Member's Choice Slide Show Competition and the Photo Book Competition (books due at Nov. meeting)

**July-Aug:** Summer seminars (no competition)

### DON'T FORGET...

**...to submit an entry form** when entering the monthly competitions at LPS meetings. They are available for download on our website.

**...to send Kay a digital copy of your winning print photo** immediately after the competition (see Page 10 for address)

**...to pick up your winning photographs** at the monthly meetings.

## INSIDE

- Biennial exhibit.....2
- State Fair.....3
- Summer outings.....4
- Calendar.....5
- June winners.....6-9
- About LPS.....10
- Board listing.....11

## LPS LOUISVILLE PHOTO BIENNIAL EXHIBIT

Opening reception: Saturday, October 5, 2-4 pm

Where: Clarksville (Ind.) Branch Library, 1312 Eastern Blvd.

Exhibiting members (see list below) should have arranged for or completed framing based on prior email correspondence (if not, see below right). If your artwork is complete and ready to hang, you may bring it to the September meeting for delivery. Otherwise, you must deliver it to Clarksville in late September. Please wrap your frame in light protective plastic or cloth as it will be touching other pieces in transport and storage. As the library is unable to hold our artwork before installation, Deborah Brownstein has offered to collect and hold the images.



Photos will be installed sometime between Sept. 30 and Oct. 3 (exact dates to come) and hang at least through the end of the Biennial on Nov. 10. All members, friends and family are invited and encouraged to attend the opening.

A complete list of Biennial exhibitions is available at [louisvillephotobiennial.com](http://louisvillephotobiennial.com).

### Exhibiting members and images

Al Wollerton - *Backside*  
 Barbara Harris - *Bluebells at Pennyryle State Park*  
 B.J. Sorenson - *Goldfinch, Lawrenceburg, KY*  
 Byron Butler - *Kentucky Cowboy*  
 Carolyn Hawkins - *Old Friend*  
 Catherine Balfe - *Louisville Snowstorm*  
 Christine Hayden - *Ewing, IN*  
 Dale Matthews - *Shelby County Horse Show*  
 David Becker - *Buck Creek, Elizabeth, IN*  
 Deborah Hennessey - *Borden Farm*  
 Eileen Strenecky - *Harvest Over*  
 George Sherrard - *Ohio River Tow*  
 Gertrude Hudson - *Dragonfly on Waterlily*  
 Greg Miller - *Louisville Big 4*  
 Hap Jones - *Gethsemani Morning*  
 Julie Holloway - *Eagles Mating Ritual*  
 Kyle Shepherd - *Shelbyville, KY*  
 Kay Sherrard - *Morning Lake Fog, Jenny Wiley, KY*  
 Kelly Davenport - *Ashland Park, Clarksville, IN*  
 Kenneth Applegate - *Fall Curves, Charlestown State Park*  
 Ken Tripp - *Big Four in the Fog*  
 Kevin Laundroche - *Paddock Broom*  
 Nick Roberts - *September Sunset*  
 Robert Dorzback - *Locust Grove*  
 Ted Heitzman - *Old K&I Railroad Bridge*

### Framing instructions

We will use one uniform frame for the exhibition and have received a group discount from Master's Frame Shop Supply, 1410 Johnson Lane in Clarksville, IN for the frames. (Phone 812-945-2525)

**Business website:** [mastersframe.com](http://mastersframe.com)

16 X 20 flat top matte black frame: \$28.50

16 X 20 regular glass: \$ 3.75

16 X 20 acrylic: \$12.75

They can also provide mats and mat-cuts, foam boards, as well as fitting, etc. if you do not wish to frame your own image.

Matting must be white; image size at least 11 x 14.

### OTHER LPS BIENNIAL SHOWS

**Deborah Brownstein's** show, "Natural Wonders," will be at the Jeffersonville Public Library, 211 E Court Ave.; opening is Saturday, Sept. 28, 6-8 pm

**David Becker** and Kimara Wilhite will have a show at Brick Street Art Studios, 428 E 6th St. in New Albany; opening is Friday, Oct. 4, 5:30-9 pm

**Debe Hennessey** is one of the students featured in the Ivy Tech Students Show at Jeffersonville Arts Alliance, 628 Michigan Ave., Sept. 27-Nov. 8; opening is Thursday, Oct. 10, 6-8 pm

## LPS STATE FAIR WINNERS



The following LPS members won ribbons and other awards in the photography competition at the 2019 Kentucky State Fair:

### ASPIRING

#### 060 Monochrome Wildlife

HM: Deborah Brownstein

#### 061 Monochrome Scenic

3rd: Rob Bailey

HM: Jim Ofcacek

#### 063 Monochrome Our Kentucky (Flickr)

HM: Kyle Shepherd

#### 070 Color Wildlife

1st: Barbara Harris

3rd: Paul Schmetzer

#### 071 Color Scenic

HM: Deborah Brownstein

HM: Paula Logsdon

#### 072 Color Unclassified

1st: Alexandria Ruhs

4th: Julie Holloway

#### 073 Color Our Kentucky

HM: Jim Ofcacek

## LPS STUDENT DIVISION

LPS sponsors the Student Division of the Kentucky State Fair. These are the major student winners, all from Louisville:

**Best in Show:** Renata Mariduenia

**Best Color:** Henry Doyle

**Best Monochrome:** Robert Sherrard

**Best Monochrome - Wolf Award:**  
Mackenzie Nelms

### ACCOMPLISHED

#### 080 Monochrome Wildlife

1st: Al Wollerton (also Best Monochrome in Show)

3rd: Kelly Davenport

4th: John Holthaus

HM: Kay Sherrard

#### 081 Monochrome Scenic

1st: Christine Hayden

2nd: John Holthaus

3rd: David Kelm

#### 082: Monochrome Unclassified

1st: David Kelm (also Hensley Award, Best Black & White)

3rd: Kelly Davenport

#### 083 Monochrome Our Kentucky

2nd: Kelly Davenport

4th: Kay Sherrard

HM: George Sherrard

#### 090 Color Wildlife

4th: David Kelm

HM: Christine Hayden

#### 092 Color Unclassified

1st: George Sherrard

#### 093 Color Our Kentucky

1st: Kay Sherrard

2nd: Kelly Davenport

HM: David Kelm

Thanks to State Fair Liaison **Carolyn Hawkins**, Student Division Liaison **Deborah Brownstein** and all the volunteers who manned the photo check-in area August 10 and 11 to make things run so smoothly!

## SUMMER OUTINGS A BIG SUCCESS



More than 20 LPS members (above) joined their fellow member and Louisville Zoo media relations manager Kyle Shepherd (front row, far right) for an **early-morning outing at the Zoo** on August 3. Many thanks to Kyle for arranging this. If you would like to share your images with the Louisville Zoo for possible media use, information will be provided at the September meeting.

\*\*

This year's **Photo Potpourri** on July 13 was another success, filled with exciting photographic opportunities and of course, a wonderful food spread! Many thanks to David and Cindy Becker for hosting such a fantastic event, and to all our volunteers and friends of LPS who make this possible.

### BOOK CONTEST COMING UP

Don't forget that entries in the annual Book Competition are due by the November meeting on Nov. 13. Photos can be taken at any time and can have won previous LPS competitions.

### INTRODUCING: LPS MEMBER SPOTLIGHT

Here's your chance to get to know your fellow LPS members a little better: Starting next month, we'll spotlight someone in the club by asking a few photo-related questions designed to show a little about them. You can nominate someone or yourself, and we'll feature one person each month. Send your suggestions to me by Sept. 25 at

[glenn@louisvillephotographic.org](mailto:glenn@louisvillephotographic.org)

### DON'T FORGET TO SUBMIT YOUR BEST SHOT AND SHARE YOUR PHOTOS WITH US!

You can submit up to five digital images each month to the "Your Best Shot" slideshow that precedes the monthly speaker at each meeting.

These aren't judged or count for points, but they are a great way for members to share something they are proud of that don't fit that month's contest category.

The photos can be from any time but should be your original work. Feel free to speak up and say a little about your photos when the images are shown at the meeting.

"Your Best Shot" digital images can be submitted as late as the day before the monthly meeting. Please send to: [LPSBestShot@gmail.com](mailto:LPSBestShot@gmail.com)

## SEPTEMBER-OCTOBER 2019

<i>Sun</i>	<i>Mon</i>	<i>Tue</i>	<i>Wed</i>	<i>Thu</i>	<i>Fri</i>	<i>Sat</i>
8	9	10	11 LPS 7:15	12	13	14
15	16	17	18	19	20 Louisville Photo Biennial starts	21
22	23	24	25 Digital entry deadline, "Panning"	26	27	28 Deborah Brownstein Biennial opening, 6-8 at Jeff Library
29	30	1	2	3	4 David Becker Biennial opening, 5:30-9 at Brick Street	5 LPS Biennial show opens, 2-4 at Clarksville Library
6	7	8	9 LPS 7:15	10 Debe Hennessey Biennial opening, 6-8 at Jeff Arts Alliance	11	12

### IN MEMORIAM:

### CHARLES "RAY" TURNER 1944-2019



**Ray Turner**, an LPS member the past seven years with his wife, Rita, passed away on June 22. Ray, a professional photographer for more than 30 years and a Vietnam veteran, was a good friend to many LPS members and will be missed. He was employed over 25 years by BellSouth as a lineman, supervisor, and supply chain purchasing manager. Ray and Rita were married 48 years. In Ray's memory, friends can donate to Crestwood Civic Club, Boy Scout Troop 167, Salvation Army, or a charity of their choosing.

## CONGRATULATIONS TO THE JUNE WINNERS!

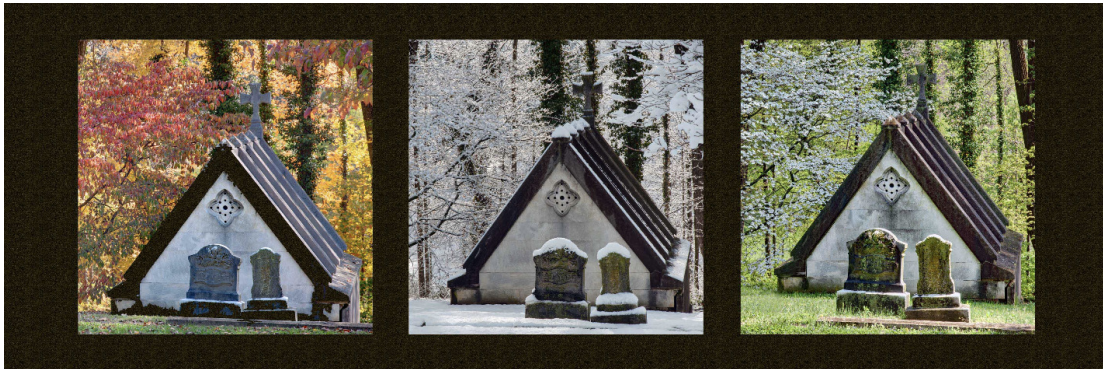
TOPIC: TRIPTYCHS

JUDGE: CAROLE BAKER

### ADVANCED

	<b>DIGITALS</b>	<b>COLOR PRINTS</b>	<b>MONOCHROME PRINTS</b>
<b>1st</b>	<b>Hap Jones</b> <i>3 Out of 4 at Cave Hill</i>	<b>Kay Sherrard</b> <i>Leaf Skeletons</i>	<b>Kay Sherrard</b> <i>Heading for the Finish</i>
<b>2nd</b>	<b>Kevin Laundroche</b> <i>Three Chiefs</i>	<b>Joe Beaudette</b> <i>Icelandic Evening Triptych</i>	<b>Christine Hayden</b> <i>Kitty Closeup</i>
<b>3rd</b>	<b>Catherine Balfe</b> <i>Yellow Flowers</i>	<b>Deborah Brownstein</b> <i>Fruity</i>	<b>Joe Beaudette</b> <i>Tavacalera Triptych</i>
<b>HM</b>	<b>Kelly Davenport</b> <i>Nature Center Cardinal Triptych</i>	<b>George Sherrard</b> <i>Venice Triptych</i>	<b>Robert Klein</b> <i>Spring St. Station</i>
<b>HM</b>	<b>Deborah Brownstein</b> <i>Let It Bee</i>	<b>Christine Hayden</b> <i>Smokies Bear Trio</i>	<b>Rita Turner</b> <i>Kenya</i>
<b>HM</b>	<b>Richard Stearman</b> <i>Looking Up On Art</i>		
<b>HM</b>	<b>Christine Hayden</b> <i>Foxy</i>		

**WINNERS FROM THE JUNE ADVANCED DIGITAL COMPETITION**  
**"TRIPTYCHS"**



**Hap Jones**

*3 out of 4 at Cave Hill*

**Kevin Laundroche**

*Three Chiefs*



**Catherine Balfe**

*Yellow Flowers*

## CONGRATULATIONS TO THE JUNE WINNERS!

TOPIC: TRIPTYCHS

JUDGE: CAROLE BAKER

### AMATEUR

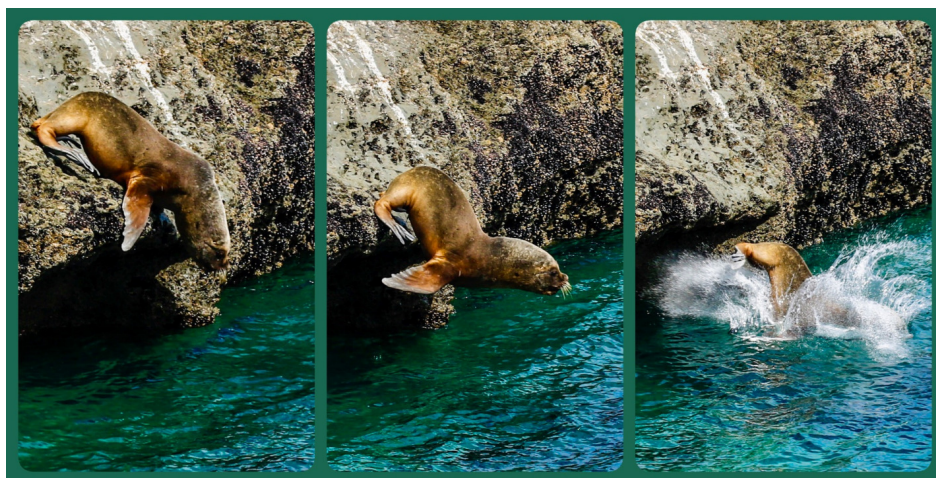
	<b>DIGITALS</b>	<b>COLOR PRINTS</b>	<b>MONOCHROME PRINTS</b>
<b>1st</b>	<b>Carolyn Hawkins</b> <i>Red Hibiscus</i>	<b>B.J. Sorenson</b> <i>Love Is In the Air</i>	<b>Deborah Hennessey</b> <i>Moo Crew</i>
<b>2nd</b>	<b>Leigh Anne Logsdon</b> <i>Splash</i>	<b>Deborah Hennessey</b> <i>Rescued Predators</i>	<b>Carolyn Hawkins</b> <i>Old Friends</i>
<b>3rd</b>	<b>Greta Garbo</b> <i>San Vitale, Ravenna</i>	<b>Barbara Harris</b> <i>Metal</i>	<b>Barbara Harris</b> <i>Macaque</i>
<b>HM</b>	<b>Barbara Harris</b> <i>Desert Bloom</i>		
<b>HM</b>	<b>Leigh Anne Logsdon</b> <i>Assortment of Pets</i>		
<b>HM</b>	<b>Greta Garbo</b> <i>Rare Wild Flowers</i>		



**WINNERS FROM THE JUNE AMATEUR DIGITAL COMPETITION**  
**"TRIPTYCHS"**

**Carolyn Hawkins**

*Red Hibiscus*



**Leigh Anne Logsdon**

*Splash*

**Greta Garbo**  
*San Vitale, Ravenna*



## ABOUT THE LOUISVILLE PHOTOGRAPHIC SOCIETY

Membership in LPS is open to everyone. You must be a member of LPS to submit photos for competition. There are two levels of competition, Amateur and Advanced, and three categories at each level, Color Prints, Monochrome Prints, and Digital submissions. No more than 6 entries may be submitted, with no more than 2 entries in each group. Digital images must be submitted **no later than two weeks before the meeting** and must be no larger than 1 MB, with no more than 1024 pixels on the long side at a resolution of no higher than 120 DPI.

You MUST compete at the Advanced level if:

- You are a professional photographer (you earn more than 50% of your annual income from photography).
- You have had a juried gallery showing.
- You have been an LPS point plaque winner (excluding Novice) for the past 3 years.
- If you are an accomplished photographer and are not in the above groups, you are encouraged to enter at the Advanced level.

See the LPS website for complete rules: [www.louisvillephotographic.org](http://www.louisvillephotographic.org)

## MEETING INFO

The Louisville Photographic Society meets the 2nd Wednesday of every month except July or August at 7:15 p.m.

Meetings are held at the new ARG Financial building, 2201 High Wickham Place. Take the Old Henry exit off the Gene Snyder Freeway and go east. Turn right onto High Wickham Place, just past Terra Crossing Blvd.

## LPS EMAIL ADDRESSES

### Website

<https://www.louisvillephotographic.org>

### Send digital entries (deadline 2 weeks before meeting) to:

[louisvillephotographic@gmail.com](mailto:louisvillephotographic@gmail.com)

### Send monthly print winners (after competition) to:

[LPSprintwinners@gmail.com](mailto:LPSprintwinners@gmail.com)

### Send Best Shot submissions (deadline day before meeting) to:

[LPSBestShot@gmail.com](mailto:LPSBestShot@gmail.com)

### Newsletter editor:

[glenn@louisvillephotographic.org](mailto:glenn@louisvillephotographic.org)

## LPS BOARD OF DIRECTORS

<b>President</b>	Christine Hayden
<b>1st Vice President</b>	Eileen Strenecky
<b>2nd Vice President</b>	Kevin Laundroche
<b>Treasurer/Kentucky State Fair Liaison</b>	Carolyn Hawkins
<b>Secretary</b>	Katie Cowherd
<b>Ex-Officio Past President</b>	Nick Roberts
<b>Summer Seminars</b>	David Becker
<b>Student Division of Kentucky State Fair and Year-End Book Competition</b>	Deborah Brownstein
<b>Website/Year-End Program/Digital Competition</b>	Kay Sherrard
<b>Mailings, Flyers, PO Box</b>	Gertrude Hudson
<b>Newsletter Editor</b>	Glenn Brownstein
<b>March of Dimes</b>	Ted Heitzman
<b>Meeting Site Liaison</b>	Al Wollerton

## SUPPORT OUR LPS SPONSORS

### Murphy's Camera

1440 Bardstown Road  
Shelbyville Road Plaza  
[murphyscamera.com](http://murphyscamera.com)

### The Print Refinery

9451 Westport Road, S119  
<https://louisvilleeast.theprintrefinery.com>

### Outdoor Photo Gear

13005 Middletown Industrial Blvd., Suite G  
Louisville, KY 40223  
502-244-2888  
[www.outdoorphotogear.com](http://www.outdoorphotogear.com)