



reflex-ions

*The monthly newsletter of the **Louisville Photographic Society***

Shah Javid to Present at April 9th Meeting

The owner of Master's Frame Shop Supply in Clarksville, Indiana, will discuss framing and matting to LPS. As most photographers know, presenting their incredible images in a professional wall mounting is very important for a good impression.

MASTER'S
Frame Shop Supply

There is always the challenge of choosing the right type of mat and frame to go with the photograph. Determining the correct size is always tricky based on the viewing distance of the observer.

To those folks who enjoy framing and matting, there can also be opportunities to frame images for other photographers as well.

Please welcome Shah to our LPS meeting as he discusses this very important part of photography at the April 9th meeting.

Quote of the Month

"Above all, life for a photographer cannot be a matter of indifference." -**Robert Frank**

Link and Learn

Every month we will try to list any valuable websites or resources that have come our way in the past month.

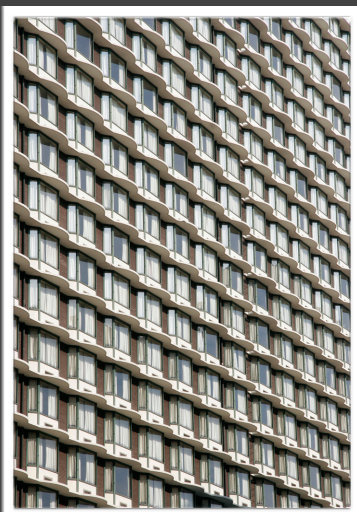
[18 Things Highly Creative People Do Differently](#)

Congratulations to the March Monthly Winners!

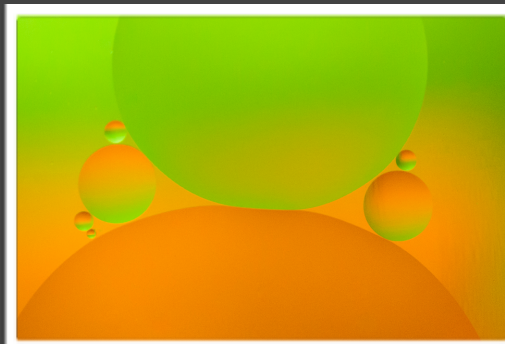
March 2014 Topic: Abstracts Judge: Clay Cook

	DIGITALS	COLOR PRINTS	MONOCHROME PRINTS	NOVICE PRINTS
1st	Alice Thompson "Galt House"	John Holthaus "What a Mistake"	George Sherrard "Holocaust Memorial"	John Whitt "Rope Jungle"
2nd	Ken Tripp "Sherbet"	Alice Thompson "Colored Pencils"	Christine Hayden "Pearl Harbor Oil Slick"	Kevin Turner "In a Row"
3rd	Nick Roberts "Rebar"	Deborah Brownstein "Simmons Hall"	Jack Cooney "Endless"	Kevin Turner "Dots"
H.M.	David Becker "Tide's Out"	David Becker "Fall Forest"	Kenny Pritchett "Vault of Dilithium Crystals"	Stephanie Turner "Turkey Feather in Evening Light"
H.M.	Tim McDonald "Drawn"	Robert Klein "Abstract #3"	John Haulthaus "Nest"	Tita Turner "Fungus Gone Wild"
H.M.	Kay Sherrard "Bracelets"	Ken Tripp "Circles and Circles"	Robert Klein "Corners"	Stephanie Turner "Spinning Lighted Top"

March Digital Winners



Alice Thompson
"Galt House"



Ken Tripp
"Sherbet"



Nick Roberts
"Rebar"

REMINDERS for upcoming events!



Date	Time	Details
Wednesday, April 30th		Digital Images Due "Barns" Category
Saturday, May 10th	9:00 AM	Annual Spring March for Babies Event Venue: Waterfront Park/ Big 4 Bridge Area-Downtown Louisville Coordinator; Ted Heitzman More Details to Come
Wednesday, May 14th	7:30 PM	Bill Fortney- Key Speaker- More info to come
Wednesday, June 9th	7:30 PM	Bill Luster-Key Speaker-More info to come

Start your book for Book of the Year Award!

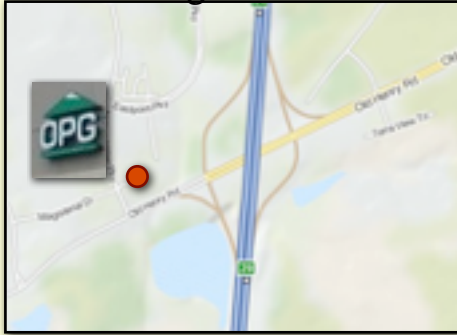
The guidelines of the 2014 Book of the Year Award are as follows:

1. All images shall be images shot in 2013 or later.
2. The book must be printed after December 1, 2013 and before the December 2014 LPS meeting.
3. The book can be any size with no limit on dimensions or number of pages.
4. The book can be any subject matter.
5. Each member can submit one book per year for judging.
6. The book will be judged at the end of 2014 and awarded in February 2015.

The submitted book will be judged on overall content quality including photography, layout and editing. Later in 2014 we plan to offer a workshop or presentation on how and where to print your own book. We plan on having members who have printed books to bring in samples to show LPS members what can be accomplished online.

More details to come in the coming months! Stay tuned and start planning your book for 2014!

LPS Meeting Location



Outdoor Photo Gear is located off the Old Henry Exit off the Gene Snyder Expway at 13305 Magisterial Dr. Louisville, KY 40223

Monthly LPS Photo Categories



2014

April- Patterns

May- Barns

June- People at Work

July-Workshop Only

August-Workshop Only

September-Long Exposure

October-City Scapes

November- Horses

December- Boats



LPS Board of Directors and Responsibilities

President	Nick Roberts
1st Vice President	Jack Cooney
2nd Vice President	Byron Butler
Treasurer/Secretary	Catherine Balfe
Summer Seminars	David Becker
Field Trip Coordinator/ Student Division KY State Fair	Deborah Brownstein
Website	Kay Sherrard
Mailings, Flyers, PO Box	Gertrude Hudson
Editor	Ken Tripp
Past President / KY State Fair Liaison	Al Wollerton
March of Dimes	Ted Heitzman
Digital Submissions /Judging	Al Boice

About the Louisville Photographic Society

Membership in LPS is open to everyone. You must be a member of LPS to submit photos for competition. The areas of competition are Color Prints, Monochrome and Digital submissions. No more than 6 entries may be submitted, with no more than 2 entries in each group.

A Novice Division has been created for people just entering photography. People entering the Novice Division may not also enter any of the above groups except Digital submissions, where they may submit two photos. Members of the Novice group may submit a total of three prints. The prints may be in color or monochrome. See the LPS website for complete rules, www.louisvillephotographic.org Digitals entries must be sent to digentries@louisvillephotographic.org, and must be received two weeks before the meeting.

Monthly meeting-Second Wednesday at 7:30 PM

[Link to Map](#)

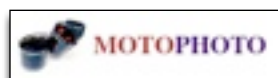
**Outdoor Photo Gear, 13305 Magisterial Drive
Louisville, KY**

Support our LPS Sponsors!



Three Louisville Locations:

-1440 Bardstown Road
-The Summit
-Shelbyville Rd. Plaza
<http://murphyscamera.com>



Two Louisville Locations;

-9451-S116 Westport Rd.
-3965 Taylorsville Rd
<http://www.motophotoky.com>



Outdoor Photo Gear

13305 Magisterial Drive
Louisville, KY 40223
(502)-244-2888
www.OutdoorPhotoGear.com