



reflex-ions

The monthly newsletter of the **Louisville Photographic Society**

Trends of PPE and More by Chris Klapheke at the November Meeting.



Clay Cook Photos

Get the skinny on new gear coming your way.

Our fellow member, LPS Host and all around great photographer, Chris Klapheke, just returned from the PhotoPlus International Conference and Expo (PPE) in New York City. This is the largest photography and imaging show in North America. Chris will discuss upcoming trends in photo gear that were exhibited and discussed at the show. Since most LPS members don't usually attend something like this, it should be a very informative session.

As most of you know, Chris is the owner of Outdoor Photo Gear. He will hopefully show us some of the latest products that may sooth our relentless quest for gear. Since Chris is also a great photographer his insights on new products coming down the pike may prove very valuable.

Join us on November 13th at 7:30 for Chris's presentation and monthly competition at Outdoor Photo Gear.

REMINDERS for upcoming events!



Dues are Due by January!



Please bring a check, for your 2013 dues. Annual dues are \$35 per household. Please note that if you plan on competing in January, you will have to have your dues paid by the January meeting date.

Alphabet Slide Show Competition in December



For the third year in a row LPS will be having an Alphabet Slide Show Competition. This competition will be in addition to the Old Things photo competition at the same meeting. Simply put together any slide show that represents letters of the alphabet.

Any member can submit an automated digital slide presentation on a thumb/flash drive or DVD that can operate on a Windows computer. The slide show should be approximately three minutes in length.

New "Book of the Year" Award Slated for 2014

In the last few years, many members have focused their shooting attention on printing their own personal photography book. The books may have been a collection of family photos, vacations or hobbies of the LPS member. With the advent of high quality online printers, the ability to publish superior quality editions has been astounding and only dreamed possible a decade or so ago.

With that in mind, LPS would like to promote the idea of printing your own book in 2014. This can be a great opportunity to improve your shooting and editing skills if you printed a book before. On the other hand it can be a kickstart opportunity to learn how to do it, if you have not done so before.

The guidelines of the 2014 Book of the Year Award are as follows:

1. All images shall be images shot in 2013 or later.
2. The book must be printed after December 1, 2013 and before the December 2014 LPS meeting.
3. The book can be any size with no limit on dimensions or number of pages.
4. The book can be any subject matter.
5. Each member can submit one book per year for judging.
6. The book will be judged at the end of 2014 and awarded in February 2015.

The submitted book will be judged on overall content quality including photography, layout and editing. Later in 2014 we plan to offer a workshop or presentation on how and where to print your own book. We plan on having members who have printed books to bring in samples to show LPS members what can be accomplished online.

More details to come in the coming months! Stay tuned and start planning your book for 2014!

Vote for the 2014 Categories at the November Meeting!

Get ready to vote for the final 2014 categories at the November 13th LPS meeting. The LPS Board has compiled the final ballots for the members to vote on for 2014.

It's never too late to plan your 2014 shooting strategy!

Ballot for 2014 Categories for LPS. Already chosen: Scenic, Your Best Shot	
Please choose ONE from each group below, by marking with an "X".	
COLUMN A	COLUMN B
Specific Subjects	Abstract / Concepts
<input type="checkbox"/> Barns	<input type="checkbox"/> Americana
<input type="checkbox"/> Glass	<input type="checkbox"/> Pure Abstract (What Is It?)
<input type="checkbox"/> Military	<input type="checkbox"/> Round
Locations	Visual
<input type="checkbox"/> Bars	<input type="checkbox"/> Leading Lines
<input type="checkbox"/> City Scapes	<input type="checkbox"/> Patterns
<input type="checkbox"/> Fairs / Festivals	<input type="checkbox"/> Perspective
Transportation	People
<input type="checkbox"/> Cars	<input type="checkbox"/> Children
<input type="checkbox"/> Bicycles	<input type="checkbox"/> Feelings & Emotions
<input type="checkbox"/> Boats (side note: Belle of Lvl 100th anniv)	<input type="checkbox"/> People At Work
Animals	Camera Techniques
<input type="checkbox"/> Birds	<input type="checkbox"/> Long Exposure
<input type="checkbox"/> Horses	<input type="checkbox"/> Out of Focus Background (Bokeh)
<input type="checkbox"/> Reptiles	<input type="checkbox"/> Panning
Do you have four "X" marks in Column A?	Do you have four "X" marks in Column B?

Sample Ballot

Quote of the Month

"Sometimes I do get to places just when God's ready to have somebody click the shutter." – **Ansel Adams**

Congratulations to the October Winners!

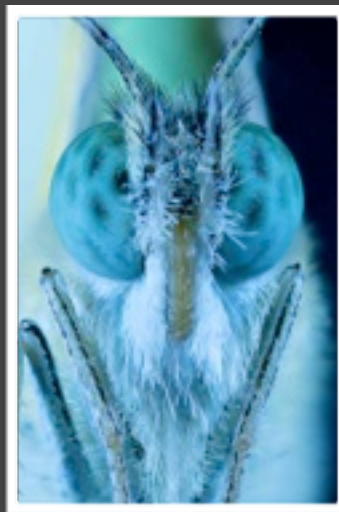
October 2013 Topic: Wildlife Judge: Joey Goldsmith

	DIGITALS	COLOR PRINTS	MONOCHROME PRINTS	NOVICE PRINTS
1st	Greg Miller <i>"Spider"</i>	David Becker <i>"Tri-Cheetah"</i>	David Becker <i>"Spots"</i>	Gordi Smith <i>"Nap Time"</i>
2nd	Greg Miller <i>"Butterfly 1"</i>	David Becker <i>"Lioness"</i>	John Holthaus <i>"Thunder Head"</i>	Katie Cowherd <i>"Mountain Goat"</i>
3rd	Ted Heitzman <i>"The Eye of Death"</i>	Jack Cooney <i>"Bulk Elk Resting"</i>	Greg Miller <i>"Spider in Shadow"</i>	Gordi Smith <i>"Low Tide"</i>
H.M.	Katie Cowherd <i>"Take a Number"</i>	George Sherrard <i>"Spiders"</i>	Jack Cooney <i>"Bull Elk in Morning River Fog"</i>	Sherry Pickerell <i>"3 Little Turtles Sitting on a Log"</i>
H.M.	David Becker <i>"Gerenuk"</i>	Greg Miller <i>"Snail"</i>	Deborah Brownstein <i>"Stripes"</i>	Lisa Brown <i>"Leopard Recess"</i>
H.M.	David Becker <i>"Bull"</i>	George Sherrard <i>"Alligator Pile"</i>	Jack Cooney <i>"Bison in Geyser Stream"</i>	Lisa Brown <i>"Chubby Checkered Thief"</i>

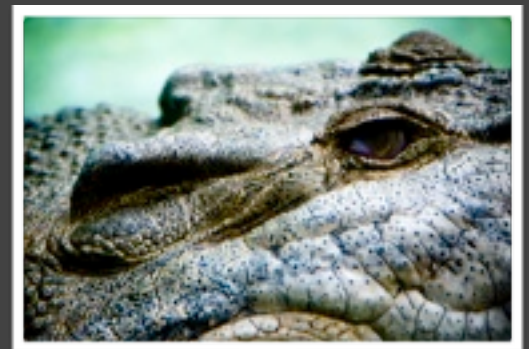
October Digital Winners



Greg Miller
"Spider"



Greg Miller
"Butterfly 1"



Ted Heitzman
"The Eye of Death"

Monthly LPS Photo Categories



2013

November – Street Shots, Must include People

December – Old Things

2014

January- Scenic

February- Member's Choice

Congratulations to Debbie Brownstein!

Debbie Brownstein earned a second place in Close-Ups on Friday night at the KY Photoscenic Weekend at Jenny Wiley State Park. About a dozen LPS members braved the cold and fog and took some great photos, many of which “made the cut” on the Saturday evening judging. All had a great time!

Got any secret shooting spots?

LPS has some of the region's best photographers. I have noticed that some of the best photographers in the world, have a tendency to “give back” by sharing their expertise and favorite locations with other photographers.

LPS can be a wonderful opportunity for you to share these local locations with fellow members.

If you would like to lead a group of LPS members to your favorite location or event, please email your editor, Ken Tripp at KDTripp@mac.com to coordinate the event.

Depending on the location, we can have members sign up ahead of time and let you be the leader to share your wealth of knowledge about the location.

If we all help each other in LPS, who knows what powerful images await!

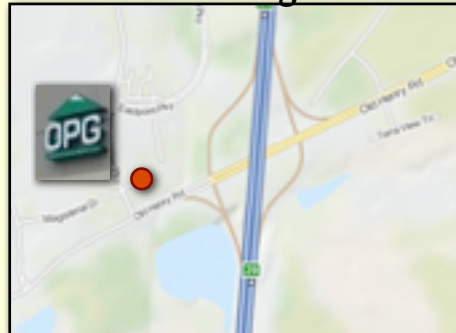
[Link and Learn](#)

Every month we will try to list any valuable websites or resources that have come our way in the past month.

30 of some of most humanistic photographs of our time.

<http://www.viralnova.com/30-awesome-photos/>

New LPS Meeting Location



Outdoor Photo Gear is located off the Old Henry Exit off the Gene Snyder Expway at 13305 Magisterial Dr. Louisville, KY 40223



LPS Board of Directors and Responsibilities	
President	Nick Roberts
1st Vice President	Jack Cooney
2nd Vice President	Byron Butler
Treasurer	Steve Hamilton
Secretary	Catherine Balfe
Summer Seminars	David Becker
Field Trip Coordinator/ Student Division KY State Fair	Deborah Brownstein
Website	Kay Sherrard
Mailings, Flyers, PO Box	Gertrude Hudson
Editor	Ken Tripp
Past President / KY State Fair Liaison	Al Wollerton
March of Dimes	Ted Heitzman
Digital Submissions / Judging / Facilities	Al Boice

About the Louisville Photographic Society

Membership in LPS is open to everyone. You must be a member of LPS to submit photos for competition. The areas of competition are Color Prints, Monochrome and Digital submissions. No more than 6 entries may be submitted, with no more than 2 entries in each group.

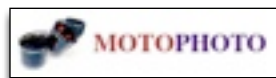
A Novice Division has been created for people just entering photography. People entering the Novice Division may not also enter any of the above groups except Digital submissions, where they may submit two photos. Members of the Novice group may submit a total of three prints. The prints may be in color or monochrome. See the LPS website for complete rules, www.louisvillephotographic.org Digitals entries must be sent to digientries@louisvillephotographic.org, and must be received two weeks before the meeting.

Monthly meeting-Second Wednesday at 7:30 PM
[LinktoMap](#)
**Outdoor Photo Gear, 13305 Magisterial Drive
Louisville, KY**

Support our LPS Sponsors!



Three Louisville Locations:
-1440 Bardstown Road
-The Summit
-Shelbyville Rd. Plaza
<http://murphyscamera.com>



Two Louisville Locations;
-9451-S116 Westport Rd.
-3965 Taylorsville Rd
<http://www.motophotoky.com>



Outdoor Photo Gear
13305 Magisterial Drive
Louisville, KY 40223
(502)-244-2888
www.OutOfPhotoGear.com