



# Reflex-ions

The monthly newsletter of the **Louisville Photographic Society**

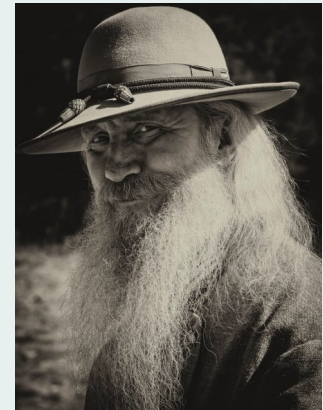


Photo Credit: Steve Cowherd

## JOHN NATION TO SPEAK IN OCTOBER

John Nation worked as a photographer for the Louisville Magazine for over 30 years. He has also done free-lance photography and has been published regionally, nationally, and internationally in both books and magazine, including Time Magazine.

[HTTP://JOHNNATIONPHOTOGRAPHY.COM/INDEX.HTML](http://JOHNNATIONPHOTOGRAPHY.COM/INDEX.HTML)

## “NEW BEGINNINGS” PHOTO CONTEST

The 2016 photo contest will open September 20, 2016 at 12 am and close October 14, 2016 at 11:59 pm. Selected finalists will premiere in Nashville, TN at the final awards night event “InSight Photography Show & Auction,” where they will be auctioned. Proceeds of the auction will go to the Insight Counseling Centers to support families, individuals, and couples in Middle Tennessee who are in need of affordable mental health care services.

<https://insightexhibit.wordpress.com/>

## 2016 MONTHLY LPS PHOTO CATEGORIES

- Jan: Scenic
- Feb: Member's Choice
- Mar: Macro
- Apr: Architectural Decay
- May: Louisville Landmarks
- June: Plants or Flowers
- July: Workshop  
(no competition)
- Aug: Workshop  
(no competition)
- Sep: Wheels
- Oct: Panorama
- Nov: Celebrations
- Dec: Red

Also in December: The Annual Member's Choice **Slide Show Competition** (formerly the “Alphabet Competition,”) and the **Photo Book Competition**.

## TELL US WHAT YOU'RE UP TO!

Do you have a gallery opening you'd like us to know about? Are you working on a photography project you'd like to share with others? If so, [email the editor](#) and let us know! We'll include it in the newsletter!

## THE LPS WEB SITE

Did you know that you can find a wealth of LPS information on our web site? Use the links to find such helpful items as the competition forms, the membership application, and copies of past newsletters.

Under the “Galleries and Winners” tab, you can find the year-end winners from previous years, as well as a listing of who has won during the current year.

On the “Members Page” you can find links to club members’ web sites.

Every month, the front page is updated with copies of the top three digital winners from the most recent competition.

Clicking on “Enter Louisville Photographic Society” on the home page takes you to information on preparing your photos for competition, directions for our meeting site, and other interesting photo tidbits. On the left of the screen is a menu of the above-mentioned links, plus a link for LPS Contacts.

The web site is formatted for both mobile devices and desktop computers.

---

*“Don’t shoot what it looks like. Shoot what it feels like.” -  
David Alan Harvey*

---

### DON’T FORGET

Don’t forget to submit an entry form when entering the monthly competitions at the LPS meetings.

They are available for download [on our web-site](#).

Just print one out, fill it out, and bring it with you to the meeting.

### SHARE YOUR PHOTOS WITH US!

Send us up to two photos a month and we may use one in this newsletter. We can’t pay you, but if your photo is published, you’ll get credit in the newsletter.

Please send photos in .jpg format, sized no larger than 1024 pixels on the longest side. Be sure to include a title for each photo. We may need to resize or crop your photos, depending on space allowed in the newsletter, but they will not be edited in any other manner.

Email your photos to [katie@louisvillephotographic.org](mailto:katie@louisvillephotographic.org). Be sure to put “Photo for LPS Newsletter” in the subject line of your email.

# October 2016

Sun	Mon	Tue	Wed	Thu	Fri	Sat
						1
2	3	4	5	6	7	8
9	10	11	12 LPS Monthly	13	14	15
16	17	18	19	20	21	22
23	24	25	26	27	28	29
30	31					

## IN PHOTOGRAPHY NEWS

### Louisville Photo Contest

Submit your best Louisville photos for a chance to be featured on a month for the 2017 calendars!

[https://  
www.facebook.com/2038  
98690025366/  
app/292725327421649?  
app\\_data=ver%3D1](https://www.facebook.com/203898690025366/app/292725327421649?app_data=ver%3D1)

The best National Parks for photography: [http://  
www.poppphoto.com/best  
-national-parks-  
photography-2016](http://www.poppphoto.com/best-national-parks-photography-2016)

## ABOUT THE LOUISVILLE PHOTOGRAPHY SOCIETY

Membership in LPS is open to everyone. You must be a member of LPS to submit photos for competition. The areas of competition are Color Prints, Monochrome Prints, and Digital submissions. No more than 6 entries may be submitted, with no more than 2 entries in each group.

A Novice Division has been created for people just entering photography. People entering the Novice Division may not also enter any of the above groups except Digital submissions, where they may submit two photos. Members of the Novice group may submit a total of three prints. The prints may be in color or monochrome. See the LPS website for complete rules, [www.louisvillephotographic.org](http://www.louisvillephotographic.org)

## MEETING INFO

The Louisville Photographic Society meets the 2nd Wednesday every month at 7:30 p.m. LPS meetings are held at the new ARGI Financial building, 2110 High Wickham Place. Take the Old Henry exit off the Gene Snyder Freeway and go east. Turn right onto High Wickham Place, just past Terra Crossing Blvd.

## SUPPORT OUR LPS SPONSORS

Three Louisville locations:

- 1440 Bardstown Road
- The Summit
- Shelbyville Road Plaza

[www.murphyscamera.com](http://www.murphyscamera.com)



Two Louisville locations:

- 9541 Westport Rd, S116
- 3965 Taylorsville Rd

[www.motophotoky.com](http://www.motophotoky.com)



13305 Magisterial Drive

Louisville, KY 40223

502-244-2888

[www.outdoorphotogear.com](http://www.outdoorphotogear.com)



## WINNERS FROM THE SEPTEMBER DIGITAL COMPETITION— “WHEELS”

1st—Ken Tripp

“Ferris In The Morning”



2nd—Stephanie Turner

“Crusty Wheel”



3rd—Gertrude Hudson

“Flower Cart”



## LPS BOARD OF DIRECTORS AND RESPONSIBILITIES

<b>President</b>	Nick Roberts
<b>1st Vice President</b>	Christine Hayden
<b>2nd Vice President</b>	Byron Butler
<b>Treasurer</b>	Catherine Balfe
<b>Secretary</b>	Katie Cowherd
<b>Summer Seminars</b>	David Becker
<b>Student Division of KY State Fair</b>	Deborah Brownstein
<b>Website/Digital Competition</b>	Kay Sherrard
<b>Digital Competition</b>	Jack Cooney
<b>Mailings, Flyers, PO Box</b>	Gertrude Hudson
<b>Newsletter Editor</b>	Katie Cowherd
<b>Past President/KY State Fair Liaison</b>	Al Wollerton
<b>March of Dimes</b>	Ted Heitzman
<b>Winning Photographs Display</b>	Al Boice

## NEW MEMBERS

- \* David Ames
- \* Lee Steiner