



Reflex-ions

The monthly newsletter of the *Louisville Photographic Society*



Photo Credit: Katie Cowherd

JOHN SNELL TO PRESENT AT MAY LPS MEETING

John Snell will be discussing his book “Red River Gorge, My Second Home” and will share some of his images and his photography efforts from 2016.



ANNUAL MARCH FOR BABIES EVENT

Event Date: May 13, 2017

Event Starts at 9:00AM

LPS Photographers Meet 8:15-8:30AM

Theme: Rock n Roll

This is the KEY Service event for LPS. Every year, 13 or 14 LPS members step up to photograph participants and sponsors of this wonderful event.

These images are used by the March of Dimes to advertise and promote their activity throughout the year. For our photographers, it can be one of the most rewarding photographic outings you can find.

For more information on this year's event, contact Ted Heitzman at tedheitzman@msn.com.

2017 MONTHLY LPS PHOTO CATEGORIES

Jan: 3 min video (postponed from Dec)

Jan: Scenic, no restrictions

Feb: Member's Choice (open)

Mar: What Is It?

Apr: Bokeh

May: Fences

June: Bridges

July: Summer Seminar
(no competition)

Aug: Summer Seminar
(no competition)

Sep: Parks

Oct: Insects

Nov: Candida—must include person(s)

Dec: Reflections

Also in December: The Annual Member's Choice **Slide Show Competition** (formerly the “Alphabet Competition,”) and the **Photo Book Competition**.

TELL US WHAT YOU'RE UP TO!

Do you have a gallery opening you'd like us to know about? Are you working on a photography project you'd like to share with others? If so, [email the editor](#) and let us know! We'll include it in the newsletter!

SAVE THE DATES !

July 29—Summer Seminar at David and Cindy Becker’s home

August 26—Summer Seminar field trip to Old Friends

LPS MEMBERSHIP DUES WERE DUE IN JANUARY

LPS dues for the year are \$35 per family. You can pay at the meeting, or you can mail your check to:

Louisville Photographic Society
P.O. Box 43731
Louisville, KY 40253

Remember, if your dues are not paid, you may not compete in 2017.

“A true photograph need not be explained, nor can it be contained in words.” - Ansel Adams

DON'T FORGET

Don't forget to submit an entry form when entering the monthly competitions at the LPS meetings.

They are available for download [on our website](#).

Just print one out, fill it out, and bring it with you to the meeting.

Please be sure to pick up your winning photographs at the monthly meetings

KEVIN LAUNDRUCHE GALLERY EXHIBIT

Art in the Library: An exhibit of images with a spot or a lot of yellow.

April 8—June 5

Opening April 8, 2:30-4:30

2nd floor Gallery

Jeffersonville Township Public Library

211 E Court Ave

Jeffersonville, IN 47130

May 2017

Sun	Mon	Tue	Wed	Thu	Fri	Sat
	1	2	3	4	5	6
7	8	9	10 LPS Meeting	11	12	13 March for Babies
14	15	16	17	18	19	20
21	22	23	24	25	26	27
28	29	30	31 Digital Entries Due			

DON'T FORGET TO SUBMIT YOUR BEST SHOT! SHARE YOUR PHOTOS WITH US!

You can enter up to five digital images each month into the “Your Best Shot” category. These submissions are not judged and do not count in points, but they are a great way for members to share something they are proud of and that may not fit a particular category. The photos can be from any time but should be your original work. Feel free to speak up and say a little about your photos when the images are shown at the meeting. Your “Best Shot” digital images are due as late as the day before the monthly meeting. Please limit your submissions to no more than five images. Send to bestshot@louisvillephotographic.org.

CONGRATULATIONS TO THE APRIL WINNERS!

APRIL 2017

TOPIC: BOKEH

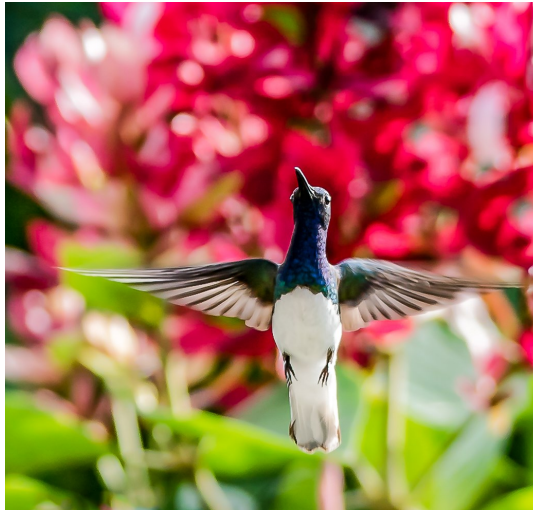
JUDGE: SCOTT UTTERBACK

	Digitals	Color Prints	Monochrome Prints	Novice Prints
1st	Turner, Stephanie – White Necked Jacobin	Miller, Greg – Lady Bug	Miller, Greg – Spider On Grass	Hawkins, Carolyn – Rainy Day Hibiscus
2nd	Miller, Greg – Lincoln Ball	Turner, Stephanie – After The Rain	Turner, Stephanie – Peek-A-Boo	n/a
3rd	Tripp, Ken – Bourbon Bottle Bokeh	Dorzback, Bob – Butterfly On Thistle	Brownstein, Deborah – Pussywillows	n/a
HM	Stearmann, Richard – Winter Flowers	Miller, Greg – Food Coloring	Hayden, Christine – Double Vision	n/a
HM	Miller, Greg – Spider	Sherrard, George – Butterflies	Brownstein, Deborah – Packard Swan	n/a
HM	Turner, Stephanie – Purple Rain	Wollerton, Al – Maple Branch Moon	Miller, Greg – Spider On Leaf	n/a
HM	Strenecky, Eileen – Man of War	Hayden, Christine – Bearly Awake		

WINNERS FROM THE APRIL DIGITAL COMPETITION— “BOKEH”

1st—Stephanie Turner

“White Necked Jacobin”



2nd—Greg Miller

“Lincoln Ball”



3rd—Ken Tripp

“Bourbon Bottle Bokeh”



IN PHOTOGRAPHY NEWS

Louisville Photo Contest

Submit your best Louisville photos for a chance to be featured on a month for the 2017 calendars!

[https://
www.facebook.com/2038
98690025366/
app/292725327421649?
app_data=ver%3D1](https://www.facebook.com/203898690025366/app/292725327421649?app_data=ver%3D1)

The best National Parks for photography: [http://
www.poppphoto.com/best
-national-parks-
photography-2016](http://www.poppphoto.com/best-national-parks-photography-2016)

ABOUT THE LOUISVILLE PHOTOGRAPHY SOCIETY

Membership in LPS is open to everyone. You must be a member of LPS to submit photos for competition. The areas of competition are Color Prints, Monochrome Prints, and Digital submissions. No more than 6 entries may be submitted, with no more than 2 entries in each group.

A Novice Division has been created for people just entering photography. People entering the Novice Division may not also enter any of the above groups except Digital submissions, where they may submit two photos. Members of the Novice group may submit a total of three prints. The prints may be in color or monochrome. See the LPS website for complete rules, www.louisvillephotographic.org

MEETING INFO

The Louisville Photographic Society meets the 2nd Wednesday every month at 7:30 p.m. LPS meetings are held at the new ARGI Financial building, 2110 High Wickham Place. Take the Old Henry exit off the Gene Snyder Freeway and go east. Turn right onto High Wickham Place, just past Terra Crossing Blvd.

SUPPORT OUR LPS SPONSORS

Three Louisville locations:

- 1440 Bardstown Road
- The Summit
- Shelbyville Road Plaza

www.murphycamera.com



Two Louisville locations:

- 9541 Westport Rd, S116
- 3965 Taylorsville Rd

www.motophotoky.com



13305 Magisterial Drive

Louisville, KY 40223

502-244-2888

www.outdoorphotogear.com



LPS BOARD OF DIRECTORS AND RESPONSIBILITIES

President	Nick Roberts
1st Vice President	Christine Hayden
2nd Vice President	Byron Butler
Treasurer	Catherine Balfe
Secretary	Katie Cowherd
Summer Seminars	David Becker
Student Division of KY State Fair	Deborah Brownstein
Website/Digital Competition	Kay Sherrard
Digital Competition	Jack Cooney
Mailings, Flyers, PO Box	Gertrude Hudson
Newsletter Editor	Katie Cowherd
Past President/KY State Fair Liaison	Al Wollerton
March of Dimes	Ted Heitzman
Winning Photographs Display	Al Boice

NEW MEMBERS

* Taylor Christie