



Reflex-ions

The monthly newsletter of the *Louisville Photographic Society*

STEVE COWHERD TO PRESENT AT APRIL LPS MEETING

Steve has been taking photographs for 4 years. He is now doing his own printing and framing and has a gallery in his home. His presentation will focus on printing and framing.

KEVIN LAUNDRACHE GALLERY EXHIBIT

Art in the Library: An exhibit of images with a spot or a lot of yellow.

April 8—June 5

Opening April 8, 2:30-4:30

2nd floor Gallery

Jeffersonville Township Public Library

211 E Court Ave

Jeffersonville, IN 47130



Elk

Photo Credit: Katie Cowherd

2017 MONTHLY LPS PHOTO CATEGORIES

Jan: 3 min video (postponed from Dec)

Jan: Scenic, no restrictions

Feb: Member's Choice (open)

Mar: What Is It?

Apr: Bokeh

May: Fences

June: Bridges

July: Summer Seminar
(no competition)

Aug: Summer Seminar
(no competition)

Sep: Parks

Oct: Insects

Nov: Candids—must include person(s)

Dec: Reflections

Also in December: The Annual Member's Choice **Slide Show Competition** (formerly the "Alphabet Competition,") and the **Photo Book Competition**.

TELL US WHAT YOU'RE UP TO!

Do you have a gallery opening you'd like us to know about? Are you working on a photography project you'd like to share with others? If so, [email the editor](#) and let us know! We'll include it in the newsletter!

YEAR END DVDS AVAILABLE

Year End DVDs are available for a \$5 donation to the Louisville Photographic Society. The DVD is approximately 25 minutes long, is set to music, and contains most of the monthly winners from 2016. Studying winning photographs is a great way to improve your photography! See Kay Sherrard at the monthly LPS meeting if you'd like a DVD.

LPS MEMBERSHIP DUES WERE DUE IN JANUARY

LPS dues for the year are \$35 per family. You can pay at the meeting, or you can mail your check to:

Louisville Photographic Society
P.O. Box 43731
Louisville, KY 40253

Remember, if your dues are not paid, you may not compete in 2017.

“Photography is the story I fail to put into words.” - Destin Sparks

DON'T FORGET

Don't forget to submit an entry form when entering the monthly competitions at the LPS meetings.

They are available for download [on our website](#).

Just print one out, fill it out, and bring it with you to the meeting.

Please be sure to pick up your winning photographs at the monthly meetings



ANNUAL MARCH FOR BABIES EVENT

Event Date: May 13, 2017

Event Starts at 9:00AM

LPS Photographers Meet 8:15-8:30AM

Theme: Rock n Roll

This is the KEY Service event for LPS. Every year, 13 or 14 LPS members step up to photograph participants and sponsors of this wonderful event.

These images are used by the March of Dimes to advertise and promote their activity throughout the year. For our photographers, it can be one of the most rewarding photographic outings you can find.

For more information on this year's event, contact Ted Heitzman at tedheitzman@msn.com

April 2017

Sun	Mon	Tue	Wed	Thu	Fri	Sat
						1
2	3	4	5	6	7	8
9	10	11	12 LPS 7:30	13	14	15
16	17	18	19	20	21	22
23	24	25	26 Digital sub- missions due	27	28	29
30						

DON'T FORGET TO SUBMIT YOUR BEST SHOT! SHARE YOUR PHOTOS WITH US!

You can enter up to five digital images each month into the “Your Best Shot” category. These submissions are not judged and do not count in points, but they are a great way for members to share something they are proud of and that may not fit a particular category. The photos can be from any time but should be your original work. Feel free to speak up and say a little about your photos when the images are shown at the meeting. Your “Best Shot” digital images are due as late as the day before the monthly meeting. Please limit your submissions to no more than five images. Send to bestshot@louisvillephotographic.org.

CONGRATULATIONS TO THE MARCH WINNERS!

MARCH 2017

TOPIC: WHAT IS IT ?

JUDGES: TOM HARDIN

	Digitals	Color Prints	Monochrome Prints	Novice Prints
1st	Brownstein, Deborah – Some Bunny	Miller, Greg – Smoke Face	Brownstein, Deborah – Ta-too	Baker, Eric – Wooden Ball
2nd	Miller, Greg – Silicon Wafer	Wollerton, Al – Plant In Florida	Balfe, Catherine – Chrysler Building	Baker, Eric – Dinosaur Spine
3rd	Hawkins, Carolyn – Marbles	Sherrard, Kay – Broken Glass	Roberts, Nick – Roadmaster Reflections	Baker, Eric – “AWL”
HM	Sherrard, George – Glacier Crevasse	Sherrard, Kay – Putt, Putt	Turner, Kevin – VAT	n/a
HM	Sherrard, Kay – Pop!	Balfe, Catherine – Water Balloons	Brownstein, Deborah – Ice Pattern	n/a
HM	Roberts, Nick – Drain Grate	Roberts, Nick – ORB Fasteners	Miller, Greg – Wave Entrance	n/a
HM				

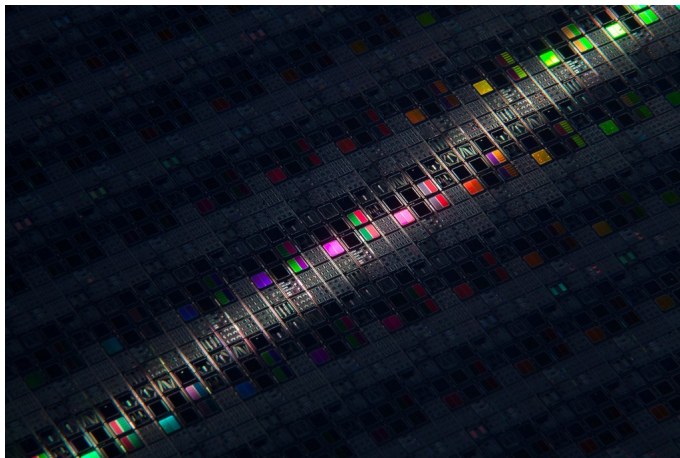
WINNERS FROM THE MARCH DIGITAL COMPETITION— “WHAT IS IT?”

1st—Deborah Brownstein

“Some Bunny”

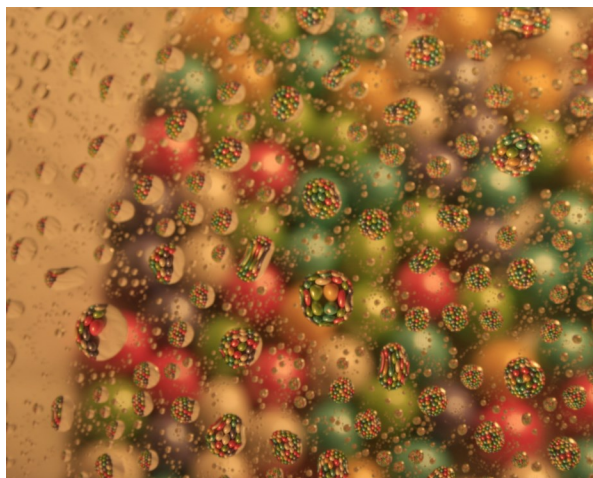


2nd—Greg Miller



3rd—Carolyn Hawkins

“Marbles”



IN PHOTOGRAPHY NEWS

Louisville Photo Contest

Submit your best Louisville photos for a chance to be featured on a month for the 2017 calendars!

https://www.facebook.com/203898690025366/app/292725327421649?app_data=ver%3D1

The best National Parks for photography: <http://www.poppphoto.com/best-national-parks-photography-2016>

ABOUT THE LOUISVILLE PHOTOGRAPHY SOCIETY

Membership in LPS is open to everyone. You must be a member of LPS to submit photos for competition. The areas of competition are Color Prints, Monochrome Prints, and Digital submissions. No more than 6 entries may be submitted, with no more than 2 entries in each group.

A Novice Division has been created for people just entering photography. People entering the Novice Division may not also enter any of the above groups except Digital submissions, where they may submit two photos. Members of the Novice group may submit a total of three prints. The prints may be in color or monochrome. See the LPS website for complete rules, www.louisvillephotographic.org

MEETING INFO

The Louisville Photographic Society meets the 2nd Wednesday every month at 7:30 p.m. LPS meetings are held at the new ARGI Financial building, 2110 High Wickham Place. Take the Old Henry exit off the Gene Snyder Freeway and go east. Turn right onto High Wickham Place, just past Terra Crossing Blvd.

SUPPORT OUR LPS SPONSORS

Three Louisville locations:

- 1440 Bardstown Road
- The Summit
- Shelbyville Road Plaza

www.murphycamera.com



Two Louisville locations:

- 9541 Westport Rd, S116
- 3965 Taylorsville Rd

www.motophotoky.com



13305 Magisterial Drive

Louisville, KY 40223

502-244-2888

www.outdoorphotogear.com



LPS BOARD OF DIRECTORS AND RESPONSIBILITIES

President	Nick Roberts
1st Vice President	Christine Hayden
2nd Vice President	Byron Butler
Treasurer	Catherine Balfe
Secretary	Katie Cowherd
Summer Seminars	David Becker
Student Division of KY State Fair	Deborah Brownstein
Website/Digital Competition	Kay Sherrard
Digital Competition	Jack Cooney
Mailings, Flyers, PO Box	Gertrude Hudson
Newsletter Editor	Katie Cowherd
Past President/KY State Fair Liaison	Al Wollerton
March of Dimes	Ted Heitzman
Winning Photographs Display	Al Boice

NEW MEMBERS

- * Christopher and Jaime Brown
- * David and Natia Kelm
- * Brian and Chris Brown